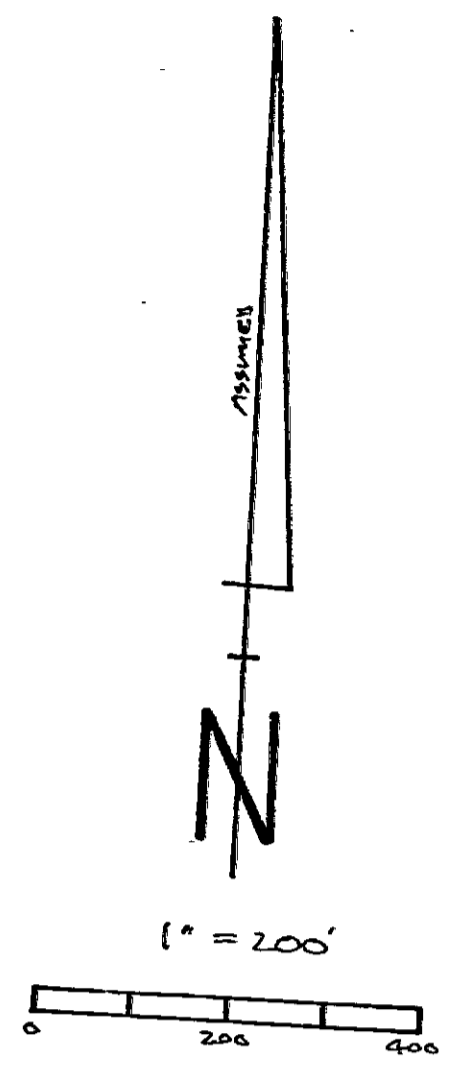


DETAIL
1" = 60'



- LEGEND:**
- FOUND IRON ROD
 - FOUND IRON ROD IN MONUMENT BOX
 - ⊗ FOUND RAILROAD SPIKE
 - FOUND P.K. NAIL
 - SET P.K. NAIL & WASHER
 - SET 3/4" x 30" IRON ROD STAMPED "6727"
- GOVT GOVERNMENT DIMENSION, 1820 SURVEY
S.R. SURVEYOR'S RECORDED DIMENSION

- REFERENCES:**
- DEED VOLUMES: AS NOTED.
SURVEYOR'S RECORDS: VOL. 12, P. 581;
VOL. 13, P. 857; VOL. 13, P. 365; VOL. 14, P. 121;
VOL. 18, P. 245.
PLAT U.S. SURVEY, 1820 (TWN-R16E).
FIELD NOTES U.S. SURVEY, 1820.
AERIAL PHOTOS, 1950, 1983.
ROAD RECORD VOL. 8, P. 404-409.
FIELD BOOK E-279, P. 1-3.
SANDUSKY COUNTY ENGINEER'S
MONUMENT INDEX.

PLAT OF SURVEY
FOR JOHN STAHL
PART NW 1/4 & PART NE 1/4, SECTION 30, T16N-R16E
RICE TOWNSHIP, SANDUSKY COUNTY, OHIO
NOV. 2006 - APR. 2009

David W. Gullai
DAVID W. GULLAI, S.R. # 6727

PLEASE
SCAN